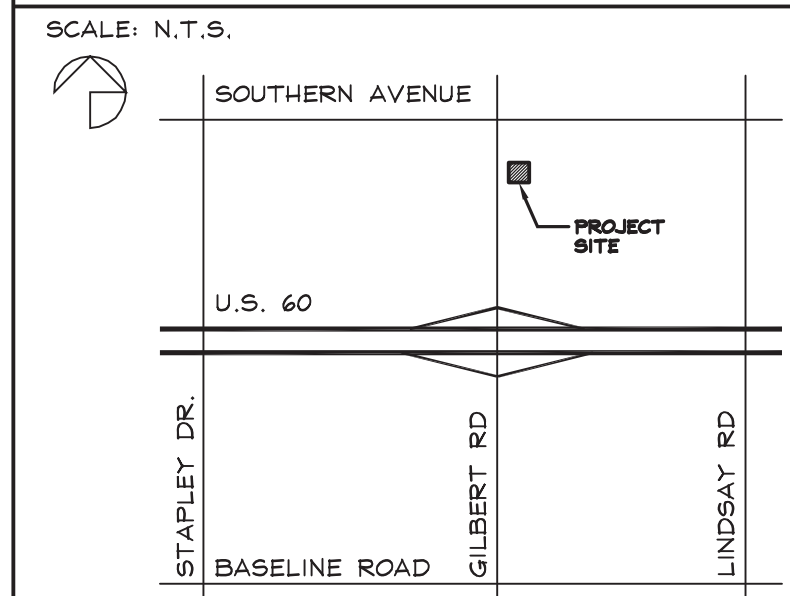


VICINITY MAP



PROJECT DATA

LOCATION: 1253 SOUTH GILBERT ROAD
 ADDRESS: MESA, AZ
 APN: 140-61-161

EXISTING ZONING: C-2 / LC (NO CHANGE PROPOSED)

LOT 2:

OCCUPANCY TYPE: BUSINESS GROUP (B)
 CONSTRUCTION TYPE: V-B

BUILDING INFORMATION:

EXISTING BUILDING AREA SUMMARY:
 BUILDING (B OCCUPANCY) = 6,291 S.F.
 DRIVE-THROUGH = 2,040 S.F.
 ROOF OVERHANGS = 1,231 S.F.
 TOTAL AREA COVERED = 9,562 S.F.

PROPOSED BUILDING AREA SUMMARY:
 BUILDING (B OCCUPANCY) = 6,396 S.F.
 DRIVE-THROUGH = 1,109 S.F.
 TOTAL AREA = 7,504 S.F.

NUMBER OF FLOORS: 1
 EXISTING BUILDING HEIGHT: 27'
 PROPOSED BUILDING HEIGHT: 28'-4" (30' ALLOWED)

LOT INFORMATION:

AREA: = 60,344 S.F. / 1.385 AC

LOT COVERAGE 7,504 S.F. / 60,344 = 12.4%

1984 C-2 ZONING SETBACKS:
 STREET (ARTERIAL) SETBACK: 25'
 REAR SETBACK: 10'
 SIDE SETBACK: 5'

CURRENT LC ZONING SETBACKS:
 STREET (COMMERCIAL COLLECTOR) SETBACK: 20'
 SIDE AND REAR SETBACK (NON-RESIDENTIAL): 15'

PARKING REQUIRED:
 RETAIL USE (1/375) REQUIRED = 17 SPACES

PARKING PROVIDED:
 STANDARD STALLS = 45 SPACES
 ACCESSIBLE STALLS = 2 SPACES
 TOTAL PROVIDED: 47 SPACES

SIGNAGE

A COMPREHENSIVE SIGN PLAN (CSP) EXISTS ON THE SITE. (CASE # BA03-048 & BA12-001)

ALL SIGNAGE MUST COMPLY WITH THE APPROVED CSP OR A SPECIAL USE PERMIT FOR MODIFICATIONS TO THE CSP WILL BE REQUIRED.

CONTACT INFORMATION:

PREPARED BY:
 MITTELSTAEDT COOPER & ASSOCIATES, LTD.
 4130 E. VAN BUREN STE. 200
 PHOENIX, AZ 85008
 JAN MITTELSTAEDT
 602-384-4230

OWNER:
 SUNWEST FEDERAL CREDIT UNION
 11839 N. 28TH DRIVE
 PHOENIX, AZ 85024

LEGAL DESCRIPTION:

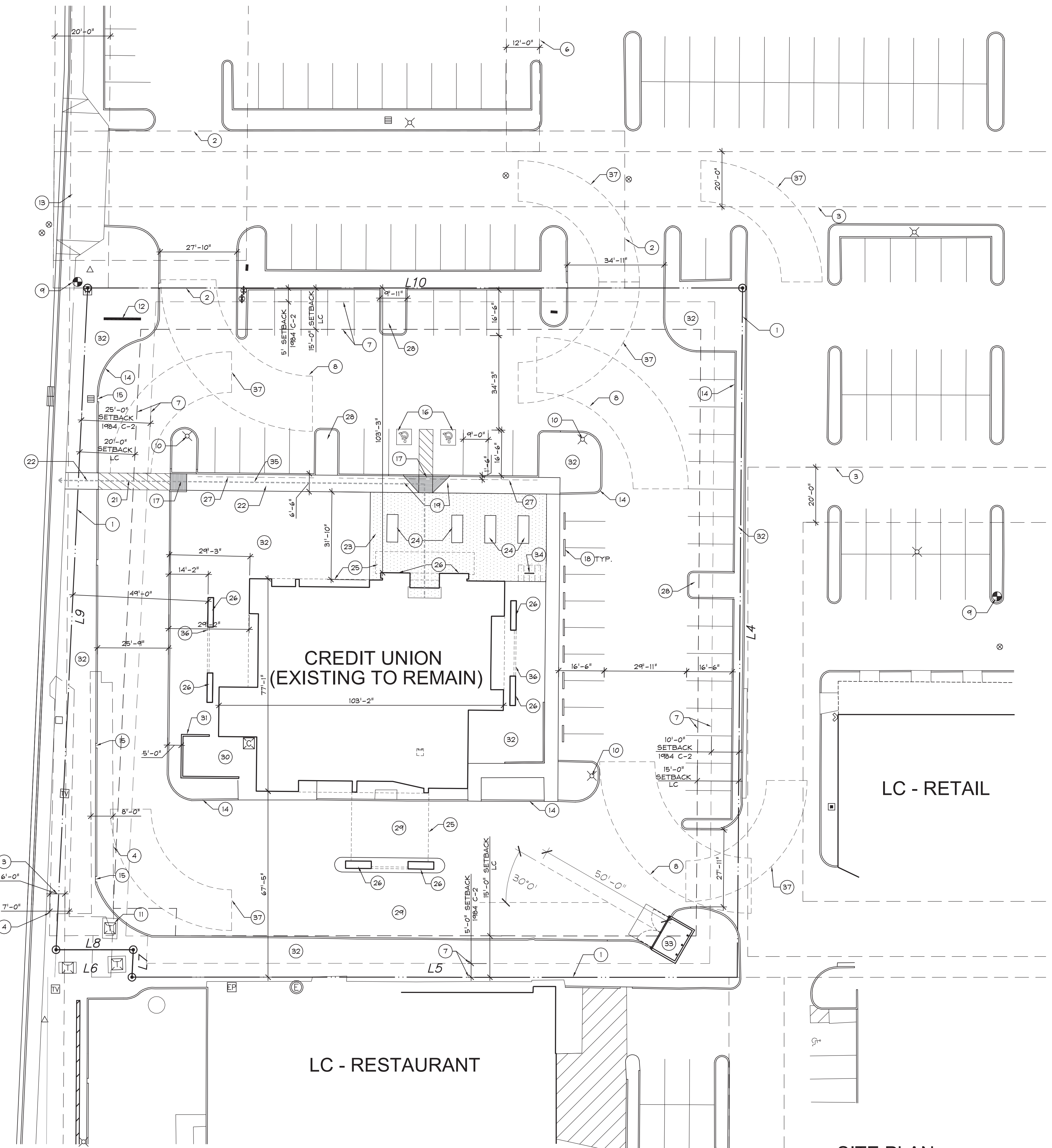
LOT 2, TABLELAND VILLAGE, ACCORDING TO THE PLAT RECORDED IN BOOK 270 OF MAPS, PAGE 32, RECORDS OF MARICOPA COUNTY, ARIZONA.

EXCEPT THAT PORTION DEEDED TO THE CITY OF MESA IN DEED RECORDED IN RECORDING NO. 99-0116222.

BOUNDARIES:

LINE	BEARING	DISTANCE
L4	S 00°26'28" W	250.00'
L5	N 89°59'49" W	219.50'
L6	N 89°59'49" W	30.50'
L7	N 02°43'50" E	10.00'
L8	N 89°59'48" W	28.00'
L9	N 02°43'50" E	240.28'
L10	S 89°59'49" E	237.50'

S. GILBERT ROAD



GENERAL NOTES

1. DO NOT SCALE DRAWINGS

KEYNOTES

- PROPERTY LINE
- RECIPROCAL EASEMENT AND OPERATING AGREEMENT
- PUBLIC UTILITY EASEMENT
- EASEMENT
- WATER LINE EASEMENT
- EASEMENT FOR STORM DRAIN
- BUILDING SETBACK LINE
- FIRE TRUCK TURNING RADIUS - 35' INSIDE / 55' OUTSIDE.
- EXISTING FIRE HYDRANT
- EXISTING LIGHT POLE LOCATION TO REMAIN. NEW FIXTURE AND 20' POLE TO BE PROVIDED.
- EXISTING TRANSFORMER AND PAD
- EXISTING MONUMENT SIGN
- EXISTING SHOPPING CENTER DRIVE
- EXISTING CONCRETE CURB
- EXISTING CONCRETE CURB CUT
- NEW ACCESSIBLE PARKING STALLS
- NEW CURB RAMP
- EXISTING CONCRETE WHEEL STOP TO REMAIN.
- NEW ACCESSIBLE PARKING STALL SIGN
- CONCRETE MEDIAN
- NEW CONCRETE SIDEWALK
- NEW CONCRETE PAVERS, SEE LANDSCAPE DRAWING.
- PLANTER, SEE LANDSCAPE DRAWING.
- BUILDING OVERHANG ABOVE
- NEW MASONRY PIER
- 18" PARKING OVERHANG
- NEW LANDSCAPE ISLAND
- NEW PAVING AT REMOVED DRIVE LANE
- EXISTING MECHANICAL YARD
- MASONRY SCREEN WALL
- LANDSCAPE AREA
- NEW REFUSE ENCLOSURE AND CONCRETE APRON PER CITY OF MESA DETAIL M-62.01 AND M-62.02.1
- NEW BICYCLE PARKING
- ACCESSIBLE ROUTE
- STEEL TRELLIS
- TRASH TRUCK TURNING RADIUS AND ROUTE

Mittelstaedt
 Cooper &
 Associates Ltd.

Architecture • Interiors

4130 E. Van Buren St., Suite 200
 Phoenix, Arizona 85008
 Phone: (602) 275-3821
 http://www.mittelstaedt.com



ALL DESIGNS, PLANS, DRAWINGS, AND SPECIFICATIONS ARE THE PROPERTY OF MITTELSTAEDT COOPER & ASSOCIATES, LTD. AS INSTRUMENTS OF SERVICE AND MAY NOT BE USED OR REPRODUCED FOR ANY PURPOSE WITHOUT THE WRITTEN CONSENT OF MITTELSTAEDT COOPER & ASSOCIATES, LTD.

ISSUED FOR DATE

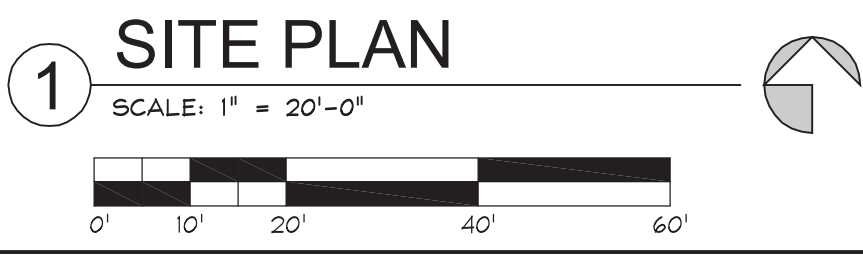
REVISION

DATE: 6/17/2019
 JOB NUMBER: 1829

SUN WEST CREDIT UNION
 1253 SOUTH GILBERT ROAD
 MESA, ARIZONA

SHEET TITLE
 SITE PLAN

SHEET NUMBER
A1.0





ALL DESIGNS, PLANS, DRAWINGS, AND SPECIFICATIONS ARE THE PROPERTY OF MITTELSTAEDT COOPER & ASSOCIATES, LTD. AND INSTRUMENTS OF SERVICE AND MAY NOT BE USED OR REPRODUCED FOR ANY PURPOSE WITHOUT THE WRITTEN CONSENT OF MITTELSTAEDT COOPER & ASSOCIATES, LTD.

ISSUED FOR _____ DATE _____

REVISION _____

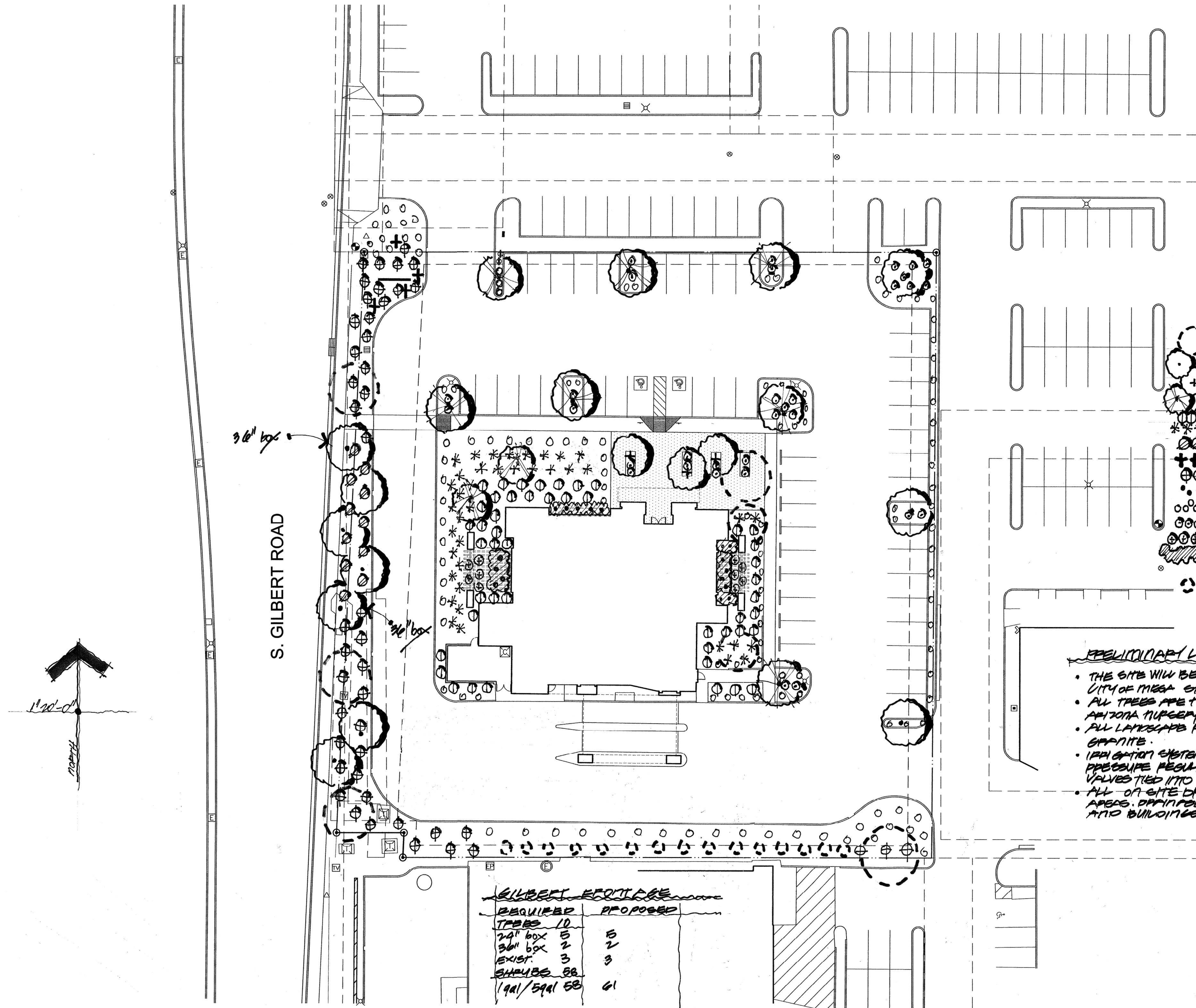
DATE 6/17/2019

JOB NUMBER 1829

SUN WEST CREDIT UNION
1253 SOUTH GILBERT ROAD
MESA, ARIZONA

SHEET TITLE
PRELIMINARY
LANDSCAPE PLAN

SHEET NUMBER
L1.0



PLANT MATERIAL LIST

SYMBOL	LOCATION NAME	SIZE	QUANT.
○	EXISTING TREES		
○	EVERGREEN ELM	24" x 36"	10
+	FRUITLESS OLIVE	24" box	3
○	CHITALPA MULTI STEM	24" box	9
○	CORAL BOUNTY GRASS	5q.	47
***	PINK MIMULUS	1q.	36
○	PURPLE RUELLIA	5q.	11
++	GIANT MESQUITE PALM	5q.	4
○	BLUE BELLS	5q.	45
○	FORTNIGHT LILY	5q.	17
○	TRAILING PURPLE LANTANA	1q.	130
○	GOLD MOUND LANTANA	1q.	32
○	ELEPHANT FOOT	1q.	10
○	PURPLE HEART	1q.	20
○	DECOMPOSED GRANITE	TONS	324
○	EXISTING CLEANER		

- PRELIMINARY LANDSCAPE NOTES**
- THE SITE WILL BE LANDSCAPED IN ACCORDANCE W/ CITY OF MESA STANDARDS
 - ALL TREES ARE TO BE STAKED IN ACCORDANCE W/ ARIZONA NURSERY PEGOU.
 - ALL LANDSCAPE PLANTERS WILL RECEIVE DECOMPOSED GRANITE.
 - IRRIGATION SYSTEM CONSISTS OF EMITTERS AND PRESSURE REGULATORS CONNECTED TO AUTOMATIC VALVES TIED INTO AN AUTOMATIC CONTROLLER.
 - ALL ON-SITE DRAINAGE TO DRAIN INTO RETENTION AREAS. DRAINAGE TO DRAIN AWAY FROM SIDEWALKS AND BUILDINGS.

GILBERT FRONTAGE

REQUIRED	PROPOSED
TREES 10	
24" box 5	15
36" box 2	2
EXIST. 3	3
SHRUBS 88	
(91/591) 58	61

1 LANDSCAPE PLAN
SCALE: 1" = 20'-0"

LNC2 SERIES	Cat.#		
	Job	Type	
	Approvals		

SPECIFICATIONS

The small sized LNC2 is designed for perimeter illumination for safety, security and identification. No uplight and prismatic lenses offer neighbor friendly lighting at typical mounting heights of 8-15'. Units have protective polyester finish for long lasting appearance. Ideal for schools, factories, hospitals, warehouses and retail applications. Energy efficient LEDs provide up to 85% energy savings when compared to traditional light sources with little to no maintenance.

Construction:

Rugged die-cast aluminum housing protects components and provides an architectural appearance. Casting thermally conducts LED heat to optimize performance and long life. Powder paint finish provides durability in outdoor environments.

Electrical:

- 120V-277V universal voltage 50/60Hz 0-10V dimming drivers
- 347V and 480V dimmable driver option in 12L-070 configuration
- Minimum operating temperature is -40°C/-40°F (excludes 12L-035 and P15 configurations)
- Drivers have greater than .90 power factor and less than 20% Total Harmonic Distortion
- Driver RoHS and IP66
- 10kA surge protector

LED(s) CCT:

- 3000K CCT nominal, 4000K CCT nominal, 5000K CCT nominal (70 CRI)
- 9, 12 and 18 LED configurations available see pages 2 and 3 for electrical and photometric details

Optical:

Zero uplight distributions using individual acrylic LED optics provide IES type II, III and IV distributions. Optional (CS) acrylic diffuser available for reduced glare. Prismatic refractor lens provides ~10% uplight for increased vertical FC and forward light projection ideal for security lighting.

Lumen Maintenance:

L96 at 60,000hrs (Projected per IESNA TM-21-11), see table on page 2 for all values

Installation:

Quick-mount adapter provides easy installation to wall or to recessed junction boxes (4" square junction box). Designed for direct j-box mount. Optional 1/2" conduit hubs available (standard for sensor, SiteSync and battery versions).

Options/Controls:

- Universal button photocontrol
- Occupancy sensor options available for complete on/off and dimming control
- SiteSync pre-commissioned wireless controls (with or without sensor)
- Integral Battery Backup provides emergency lighting for the required 90 minute path of egress
- Dual Driver and Dual Power Feed option for 18L-070 versions

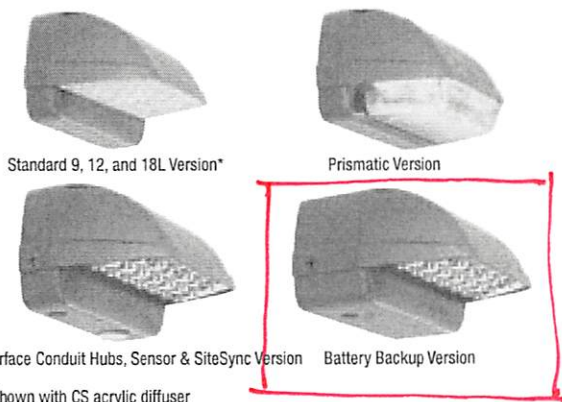
Listings:

- Listed to UL1598 and CSAC22.2#250.0-24 for wet locations
- DesignLights Consortium® (DLC) qualified. Please refer to the DLC website for specific product qualifications at www.designlights.org
- Made-to-order versions are IP-65 rated

Warranty:

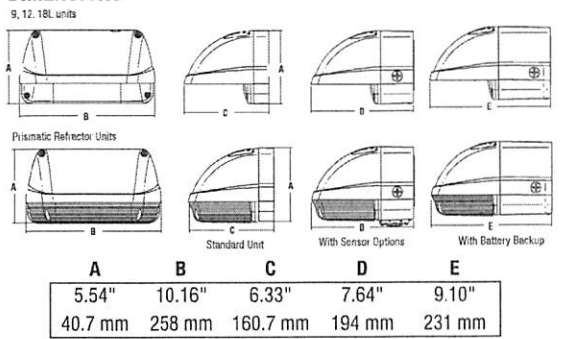
Five year limited warranty (for more information visit: <https://www.hubbell.com/hubbellighting/en/warranty>)

PRODUCT IMAGE(S)



*Shown with CS acrylic diffuser

DIMENSIONS



BASE MODEL 7.0 lbs / 3.2 kg
PC SENSOR 7.5 lbs / 3.4 kg • BBU MODELS 9.5 lbs / 4.3 kg

CERTIFICATIONS/LISTINGS



SHIPPING INFORMATION (Stock)

Catalog Number	G.W(kg)/CTN	Carton Dimensions			Carton Qty. per Master Pack
		Length Inch (cm)	Width Inch (cm)	Height Inch (cm)	
LNC2-12LU	14.3 (6.5)	14.5 (37)	11.4 (29)	8.4 (21.5)	2
LNC2-18LU	14.8 (6.7)	14.9 (38)	11.4 (29)	8.4 (21.5)	2

ORDERING INFORMATION – ORDERING EXAMPLE: LNC2-12L-4K-070-3-1-DB-PCU-EH-CS

LNC2	-		-		-		-		-		-		-		-	
SERIES	LED SELECTION	CCT/CRI	DRIVE CURRENT	VOLTAGE	MOUNTING	CONTROL OPTIONS	OPTIONS									
LNC2 Small LitePak LNC2	9L 9 LEDs 12L 12 LEDs 18L 18 LEDs P15 15w Prismatic Refractor P25 25w Prismatic Refractor P35 35w Prismatic Refractor	3K 3000K, 70 CRI 4K 4000K, 70 CRI 5K 5000K, 70 CRI AM Amber (350mA only)	070 700mA 035 350mA (12L & 18L only) IES DISTRIBUTION 2 ¹ IES Type II 3 ¹ IES Type III 4 ¹ IES Type IV FT Forward Throw (Prismatic Refractor only)	U 120V-277V 1 120V 2 208V 3 240V 4 277V 5 ⁸ 480V F ³ 347V	Leave Blank for down position NV ² Inverted FINISH DB Dark Bronze Textured BL Black Textured GYS Gray Smooth PS Platinum Silver Smooth WH White Textured CC Custom Color	SCP ^{4,5} Occupancy Sensor Programmable (Dim) PCU Universal Button Photocontrol SWP ⁸ SiteSync Pre-Commission SWPM SiteSync Pre- ^{6,7} Commission w/ OCC Sensor SPECIFY SCP HEIGHT 8F Up to 8ft mount height 20F Up to 20ft mount height	EH ³ Battery Backup Unit with Heater (-30°C) E ³ Battery Backup Unit (0°C) F ³ Fuse & Fuse-holder (not available with Battery Backup) CS Comfort Shield (N/A with Prismatic Refractor) 2DR Dual Driver (18L - 700mA only) 2PF Dual Power Feed (18L - 700mA only) CH Surface Conduit Hubs									

1 IES distributions only available with 9L, 12L, and 18L versions
2 Not available with occupancy sensor, battery backup or prismatic refractor options
3 Must specify voltage (120 or 277 only for E & EH)
4 Must order minimum of one remote control to program dimming settings. 0-10V fully adjustable dimming with automatic daylight calibration and different time delay settings, 120-277V only
5 PCU option not applicable, included in sensor
6 18L - 700mA versions only. Not available with 2DR or 2PF options. Must specify group and zone information at time of order
7 Specify time delay, dimming level and mounting height
8 12L - 700mA version only

Fixture @ Entry & SoftLts

Catalog No. _____

Type _____

Project _____

RL38SA

6" LED New Construction StopAire® Non-IC Recessed Downlight

Specifications/Features

Housing/Mounting

Performance LED fixture delivering up to 1600 lumens in a smooth wide beam.
 Requires minimum 3" clearance around fixture from insulation material. Thermal protection provided in case of improper insulation use. Aluminum housing with galvanized steel mounting frame.
 Dual Extension bars adjustable for 16" and 24" center joists (14-1/4" – 24-1/2"). Hanger bars may be extended to rest on T-bar ceilings. Optional clip-on T-bar hangers also available. Nailor bar hangers feature a locking screw to secure housing in desired location along bar hangers.

Electrical

UL8750 and Class 2 Compliant, RoHS Compliant.
 Output over-voltage, over-current and short circuit protection. Prewired junction box with convenient screwdriver pry-outs: (6) 1/2", (1) 1/2"x3/4" concentric and (4) Romex pryouts. Spring-latch access plates. Quick-connect push-in wire connectors provided. Approved for through-circuit wiring. Max: (8) #12 AWG (4 in/4 out). Wiring should be rated for at least 90°C.

Lamp

Light engine consists of a single, high output multi-chip LED array enabling precise optical control. Excellent fixture-to-fixture color consistency with a 3-step MacAdam Ellipse tolerance. Precisely engineered optical system consists of an aluminum reflector and highly transmissive diffusion lens. The system provides a smooth uniform beam while eliminating view of LED array. A wide beam distribution is provided as standard. Optical system accessories with different beam distributions are available. System designed and rated for 50,000 hours at 70% lumen maintenance,

Dimming

All RL38 LED downlights are available for non-dimming and dimming applications. For a list of compatible dimmers, refer to the [Dimming Specifications sheet](#).

Trims

Many trim options available to complement any design style. See attached trim spec sheet for information and details.

Warranty

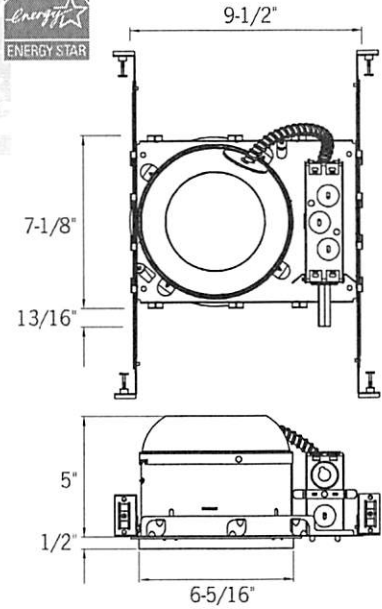
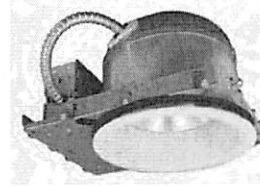
This complete fixture is covered by ConTech's full five (5) year replacement guarantee after date of purchase. Emergency Battery option is covered by a one (1) year replacement guarantee after date of purchase.

Listing

cCSAus Certified to UL Standards. Suitable for damp locations. Conforms to Washington State Energy code (WSEC) for low air infiltration. Tested in accordance with ASTM E283 (2.0 CRM or less). Assembled in the USA.

Energy Star certified:

- Series 1, 2 and 3.
- Certified trims only: CTR3001-WHT, CTR3001H-WHT, CTR3002-(CLR, PL, WHT).
- Lutron dimming options are not Energy Star certified.



Ceiling Opening: 6-1/2"
 Ceiling Thickness: 1/2" – 1-1/2"

	Series 1	Series 2	Series 3
Input Wattage (W)	11	15	22
Input Current (A) 120/277	.09/.04	.13/.06	.18/.08
Input Voltage			
120V Dimming (Triac, ELV, 0-10V)		120V AC, 50/60Hz	
277V Dimming (0-10V)		277V AC, 50/60Hz	
Lutron HiLume® Dimming		120V AC, 50/60Hz	
Lutron EcoSystem® Dimming		120V AC, 50/60Hz	
		277V AC, 50/60Hz	
Color Temp	2700K/3000K/3500K/4000K		
CRI	90+		
Driver			
Power Factor	> 0.90		
THD	< 20%		
Dimming			
Triac, ELV, 0-10V	10-100%		
Lutron®	1-100%		

PARKING LOT / Existing Locations
20' Pole

H.I.D. AREA LIGHTING

LUMENATOR SERIES-HID

SPECIFICATIONS

HOUSING

Heavy cast low copper aluminum assembly (A360 alloy, <0.4% copper) Minimum wall thickness is .188". Housing attaches to pole via a one piece, extruded aluminum arm with centering guides for internal draw bolts. Housing/pole junction is gasketed. All exposed hardware is stainless steel. Internal protected hardware is electro-zinc plated.

LENS ASSEMBLY

Precise, durable cast aluminum door frame surrounds 3/16" clear tempered glass lens. Glass is sealed to door with high temperature silicone seal. Closed cell EPDM gasketing compressed between door and housing seals optical chamber.

OPTICS

Specular Alzak® optical segments rigidly mounted in an aluminum frame, which attaches to the housing as a one piece module. All sockets are porcelain 4KV pulse rated, medium base (E26) up to 150W or pin-oriented mogul base (E39) up to 400W. Reflector modules are factory prewired with a quick-disconnect plug.

ELECTRICAL COMPONENTS

All electrical components are UL and cUL recognized mounted on a single plate and factory prewired with quick-disconnect plugs. Electrical module attaches to housing with no-tool hinges and latches, accessible by opening the lens frame. Magnetic MH ballasts are high power factor (100W - 150W) or CWA (250W - 400W), -20°F starting, multi-tap 120-277V or 480V, 60Hz. All HPS ballasts are core and coil, high-reactance, high power factor (100W - 150W) or CWA (200W - 400W), -40°F starting.

FINISH

Electrostatically applied TGIC Polyester Powder Coat on substrate prepared with 20 PSI power wash at 140°F. Four step iron phosphate pretreatment for protection and paint adhesion. 400°F bake for maximum hardness and durability. Texture finish is standard.

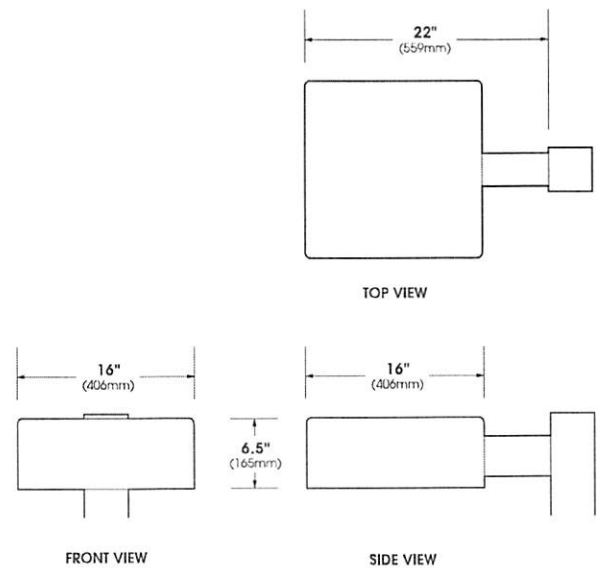
PROJECT NAME: _____

FIXTURE TYPE: _____



LUM

PATENT PENDING



LPC Light Pollution Control Classification System
Full cutoff 0% Uplight Luminaire

UL U.L. Listed for wet location

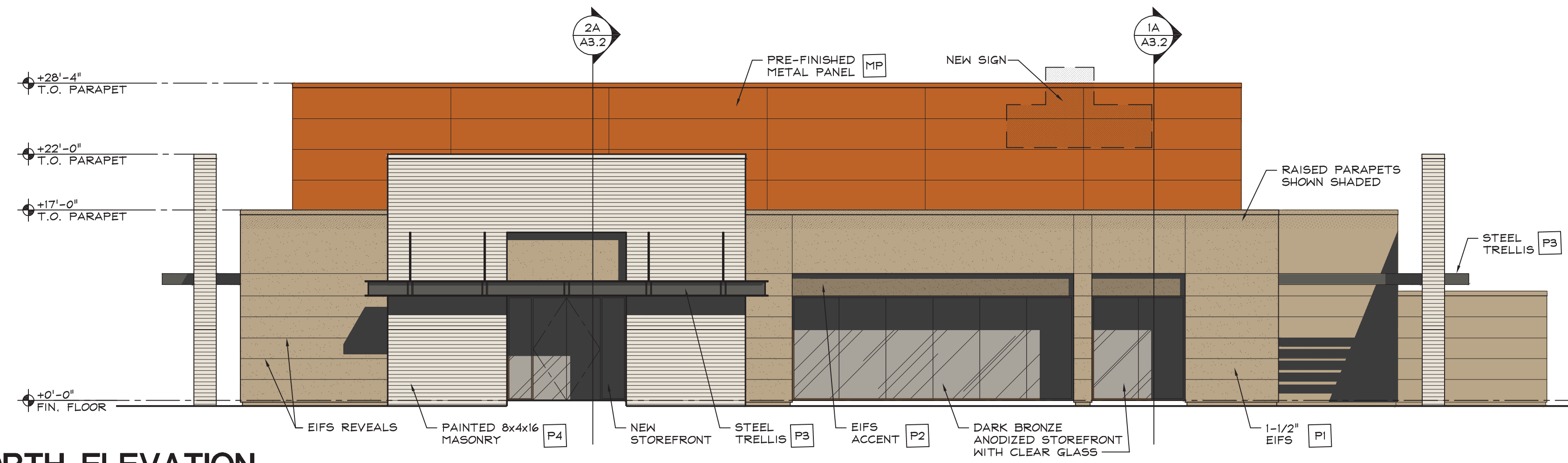
MADE IN THE USA

2016020

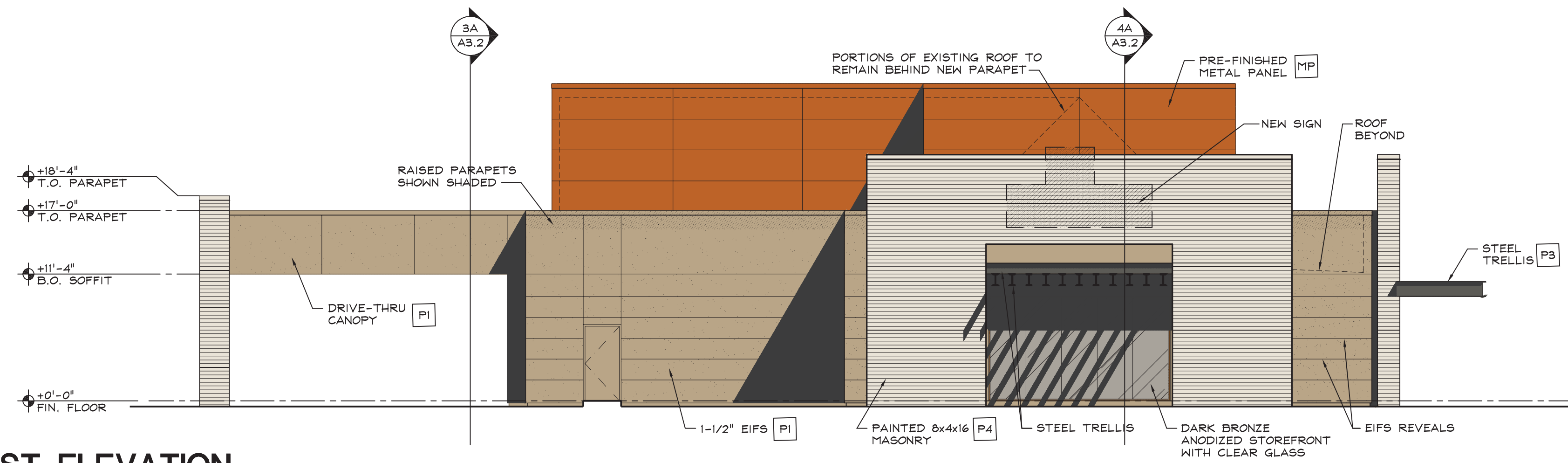
U.S. Architectural Lighting

660 West Avenue O, Palmdale, CA 93551
Phone (661) 233-2000 Fax (661) 233-2001
www.usalighting.com

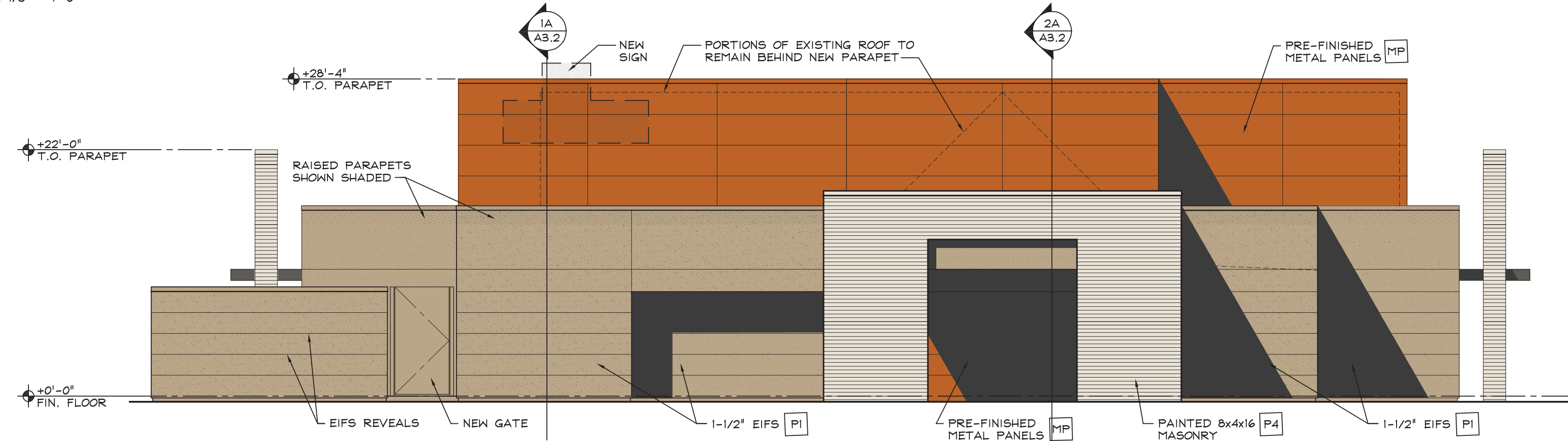
U.S. ARCHITECTURAL LIGHTING



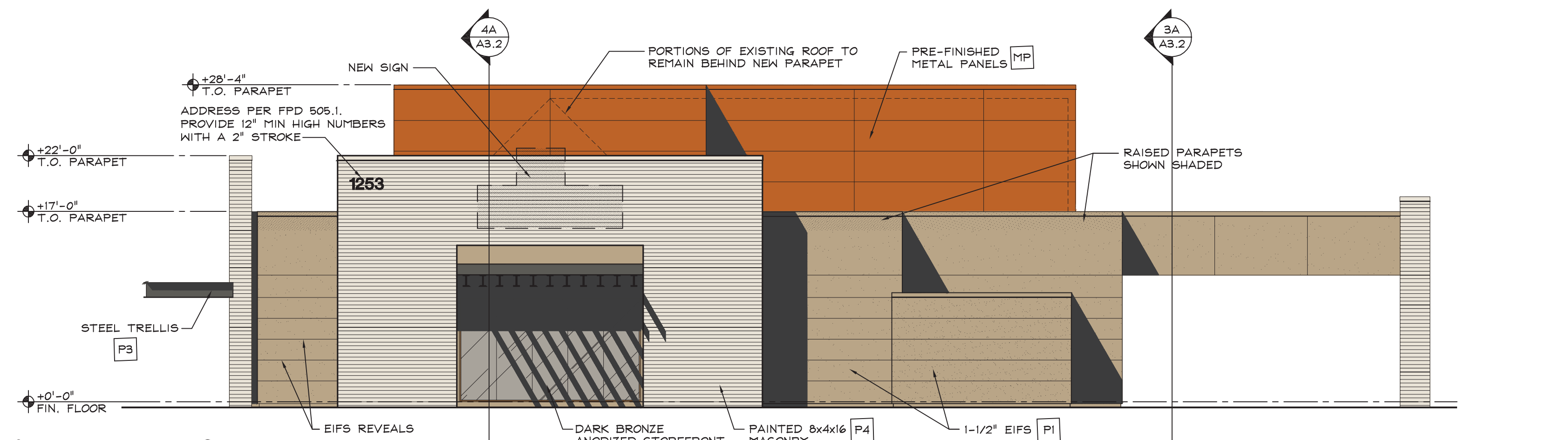
1 NORTH ELEVATION
SCALE: 1/8" = 1'-0"



2 EAST ELEVATION
SCALE: 1/8" = 1'-0"



3 SOUTH ELEVATION
SCALE: 1/8" = 1'-0"



4 WEST ELEVATION
SCALE: 1/8" = 1'-0"

GENERAL NOTES

- A. A COMPREHENSIVE SIGN PLAN (CSP) EXISTS ON THE SITE. (CASE # BA83-043 & BA12-001)
- B. ALL SIGNAGE MUST COMPLY WITH THE APPROVED CSP OR A SPECIAL USE PERMIT FOR MODIFICATIONS TO THE CSP WILL BE REQUIRED.

FINISH MATERIALS

- P1 E.I.F.S. - MAIN, COLOR TO MATCH DUNN EDWARDS DEC760 "DESERT GRAY"
- P2 E.I.F.S. - ACCENT, COLOR TO MATCH DUNN EDWARDS DE6216 "BARREL STOVE"
- P3 PAINTED STEEL DUNN EDWARDS DET628 "CHARCOAL SKETCH"
- P4 8"x4"x16" PAINTED CMU BLOCK, COLOR TO MATCH DUNN EDWARDS DE6212 "CRISP MUSLIN"
- MP PRE-FINISHED METAL PANEL SYSTEM ATAS INTERNATIONAL COLOR #23 "COPERTONE"

Mittelstaedt
Cooper &
Associates Ltd.

Architecture • Interiors

4130 E. Van Buren St., Suite 200
Phoenix, Arizona 85008
Phone: (602) 275-3821
http://www.mittelstaedt.com



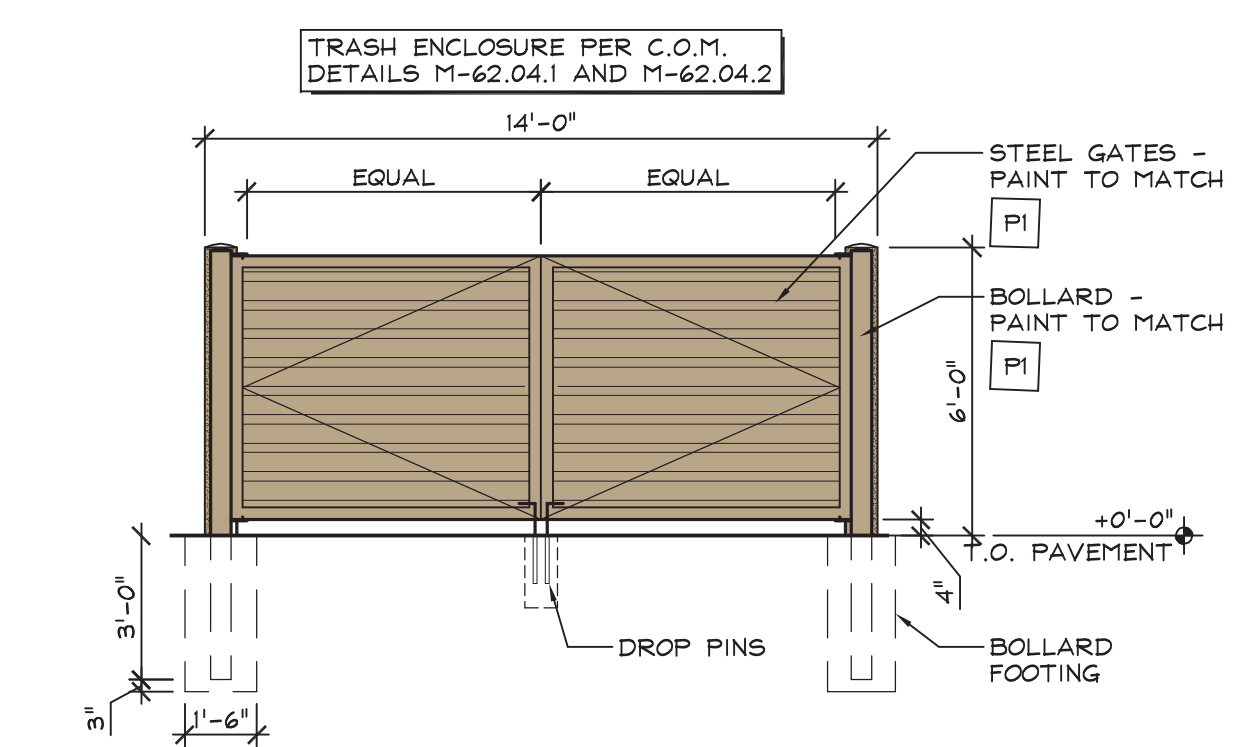
ALL DESIGNS, PLANS, DRAWINGS, AND SPECIFICATIONS ARE THE PROPERTY OF MITTELSTAEDT COOPER & ASSOCIATES, LTD. AS INSTRUMENTS OF SERVICE AND MAY NOT BE USED OR REPRODUCED FOR ANY PURPOSE WITHOUT THE WRITTEN CONSENT OF MITTELSTAEDT COOPER & ASSOCIATES, LTD.

ISSUED FOR _____ DATE _____

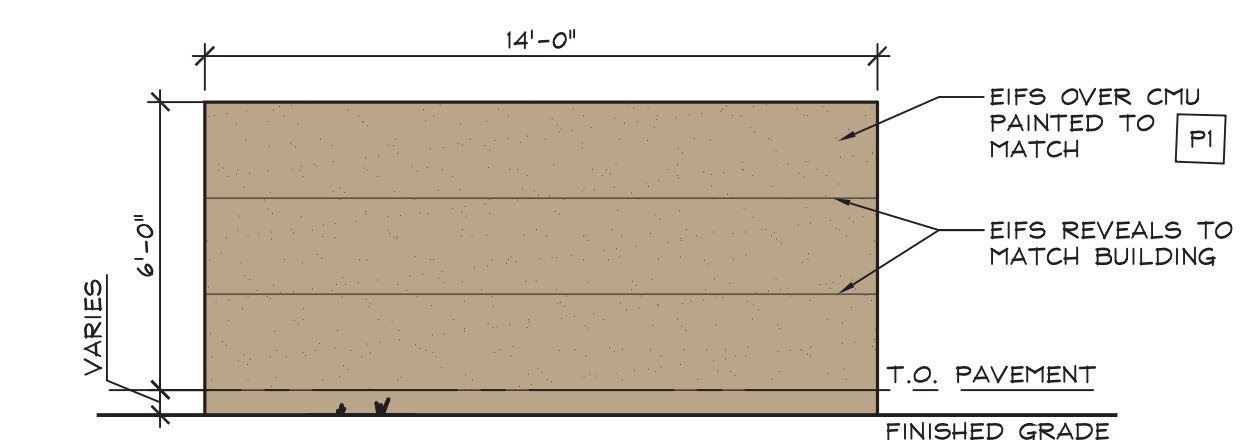
REVISION _____

DATE 6/17/2019

JOB NUMBER 1829



5 TRASH ENCLOSURE FRONT ELEVATION
SCALE: 1/4" = 1'-0"



6 BACK ELEVATION
SCALE: 1/4" = 1'-0"

SUN WEST CREDIT UNION
 1253 SOUTH GILBERT ROAD
 MESA, ARIZONA

SHEET TITLE
EXTERIOR ELEVATIONS

SHEET NUMBER
A3.1



① PROPOSED ENTRANCE PERSPECTIVE



② PROPOSED NW CORNER PERSPECTIVE



③ PROPOSED SW CORNER PERSPECTIVE



④ PROPOSED SE CORNER PERSPECTIVE



⑤ EXISTING ENTRANCE



⑥ EXISTING NWC



⑦ EXISTING SWC



⑧ EXISTING SEC

Mittelstaedt
Cooper &
Associates Ltd.

Architecture • Interiors

4130 E. Van Buren St., Suite 200
Phoenix, Arizona 85008
Phone: (602) 275-3821
http://www.mittelstaedt.com



ALL DESIGNS, PLANS, DRAWINGS, AND SPECIFICATIONS ARE THE PROPERTY OF MITTELSTAEDT COOPER & ASSOCIATES, LTD. AS INSTRUMENTS OF SERVICE AND MAY NOT BE USED OR REPRODUCED FOR ANY PURPOSE WITHOUT THE WRITTEN CONSENT OF MITTELSTAEDT COOPER & ASSOCIATES, LTD.

ISSUED FOR: DATE:

REVISION

DATE
6/17/2019

JOB NUMBER
1829

SUN WEST CREDIT UNION
1253 SOUTH GILBERT ROAD
MESA, ARIZONA

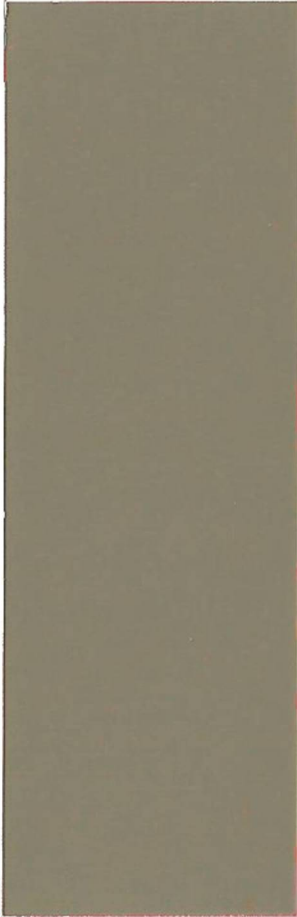
SHEET TITLE
EXTERIOR ELEVATIONS

SHEET NUMBER
A3.0

STOREFRONT SYSTEM TO BE DARK
ANODIZED BRONZE WITH CLEAR GLASS

EIFS - ACCENT

DE6216 BARREL STOVE
LRV 21



EIFS - MAIN

DEC 760 DESERT GRAY
LRV 36



STEEL

DET628 CHARCOAL SKETCH
LRV 11



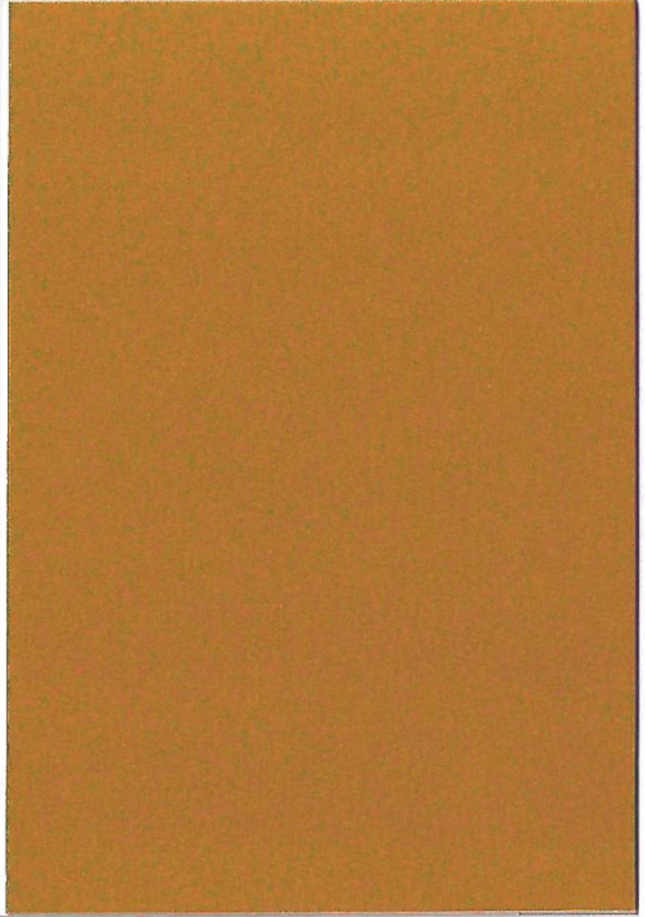
PAINTED BLOCK

DE6212 CRISP MUSLIN
LRV 71



METAL PANEL

ATAS INTERNATIONAL COLOR #23 "COPERTONE"
SRI 57



Sun West Federal Credit Union Color Board

Mittelstaedt
Cooper &
Associates Ltd.
Architecture • Interiors

4130 E. Van Buren St., Suite 200
Phoenix, Arizona 85008
Phone: (602) 275-3821
<http://www.mittelstaedt.com>

PROJECT #: 1920

1253 S. Gilbert Road
Mesa, Arizona 85204

SHEET TITLE
Color Board

SHEET NUMBER

CB-1